

Nutrition Facts

Serving Size 2 tbsp (30 mL)
Servings Per Container about 122

Amount Per Serving

Calories 10

% Daily Value*

Total Fat 0g 0%

Sodium 350mg 15%

Total Carbohydrate 2g 1%

Dietary Fiber Less than 1g 2%

Sugars 2g

Protein 0g

Vitamin A 2%

*Percent Daily Values are based on a 2,000 calorie diet.

REFRIGERATE AFTER OPENING - DO NOT USE
IF INNER SEAL IS BROKEN OR TORN - STORE
UNOPENED CONTAINER AT ROOM TEMPERATURE

MESA GRANDE™

RECOMMEND USE BY:

MILD

Distributed By: Pace Foods,
A Division Of Campbell Soup
Company, P.O. BOX 9200,
Paris, TX 75461

INGREDIENTS:

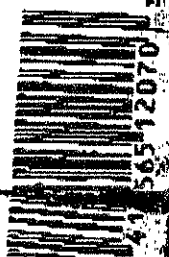
Crushed tomatoes (water,
concentrated crushed tomatoes),
water, fresh jalapeño peppers, distilled
vinegar, fresh onions, salt, dehydrated
onions, xanthan gum, dehydrated
garlic and natural flavoring.



SHAKE WELL

Made With
FRESH
Jalapeño
Peppers

12070-4



NET WT. 8 LB. 10 OZ. (138 OZ.) 3.91 kg